

GOVERNMENT OF GUJARAT APPROVED
SIDDHI INDUSTRIAL INFRASTRUCTURE PARK

OPP WAGHOIDA GIDC, NEAR MGVCL SUBSTATION (GEB) ,
VILLAGE : WAGHODIA, PINCODE - 391 760
DIST: VADODARA, GUJARAT, INDIA

www.siddhiindustrialpark.com
info@siddhiindustrialpark.com

Kirit Vadalia
+91 98240 24786

STEEL INDIA

Office : 899/4, GIDC Estate, Makarpura,
Vadodara - 390 010.

Gujarat State, India
Contact : +91 265 2630 786
2644786 - 2644986

Email : info@steelindia.com

Shree B. R. Patel Corporation Group

GOVERNMENT OF GUJARAT APPROVED
SIDDHI INDUSTRIAL INFRASTRUCTURE PARK

FREE HOLD N.A. LAND
AT : WAGHODIA,
DIST : VADODARA
GUJARAT, INDIA



PEW THERMAX BOMBARDIER ONGC SABIC MODERN SHANKAR PACKAGING ESQUIRE
L&T ARCELOR MITTAL INNOVATIVE MODERN TUBE IND CPE PETROFILS HAVER IBAU BUNDY IDEX HEMVIN
JINDAL RAIL INFRASTRUCTURE POLYWIN CABLES RPGASTA ARZEN JINDAL STEEL (JSL) TOTO HNG JBR
DUPONT ASTER Prayas Engg ELECON KUSTER CALICO MACHINERY LTD POLYCAB
B R A Y SUZLON GPEL TYCO NETAFIM TORRECID
CONTROLS SEW VASU SYNEFRA ORBIT SANGHAVI
PETRONET LNG TEADIT SIEMENS APPOLO TYRES SPIC DRESSER RAND
ALSTOM TDW SETCO ABB JCT MUNJAL AUTO SUPREME
SUN PHARMA FAG LUCY MAN TURBO JINDAL AGRO E L E M A X
GMW MATRIX GAMESA APS LARSEN & TOUBRO LIMITED MOFLEX
VOLTAMP COSMOS ELEMEX ITT-XYLEM QUICK HIGHTEC ENGINEERING CONSTRUCTINO & CONTRACTS DIVISION
AREVA GSPC PUCARO VOITH D ANKE POWER KPES
HEMVIN BELL CERAMICS FLEXATHERM ZEPPELIN ELCEN GAIL
GM HIMALAYA CAST NIRMA ERDA TATA ENTERPRISE TPI VOLTAMP
ENPAY INS PROS TAKONA RAJPUTANA SCHNEIDER ELECTRIC KRITON
KUNKEL WAGNER ROTEX GUJARAT METAL CAST RATNAVEER MATRIX
IOL LEAR JEWELL KEMROCK SPACO GALAXY SAVTEIK B A N C O
LAFARGE EPOXY HOUSE GAMMON STEEL INDIA CPP OSWAL IND ROYAL CUSHION
AREVA PHILLIPS ASAL TATA AXTEL L&T - ESP EXTRUSION RR KABEL NBC KEW
HERO MOTOCORP Ltd PANASONIC KAIZENA AVID THERMALLOY WINDAR
Koch GLITSCH SMITH GUNNEBO MAXWAX SEFORGE POLYCAB GAMESA
RELIANCE WEATHER FORD EPOXY HOUSE CEAT CONMAT
FLINT GROUP CONMAT INTEGRA INDIA TBEA ACCORD JORD
SHAKUN POLYMER PANCHMAHAL STEEL DHAMM RIHNE ENGG. - KILBERN
BHARAT FORGE ECOMAN DIVYA BHASKAR L & T INFOTECH NETAFIM

SIDDHI INDUSTRIAL INFRASTRUCTURE PARK

GOVERNMENT OF GUJARAT APPROVED

SIDDHI INDUSTRIAL INFRASTRUCTURE PARK

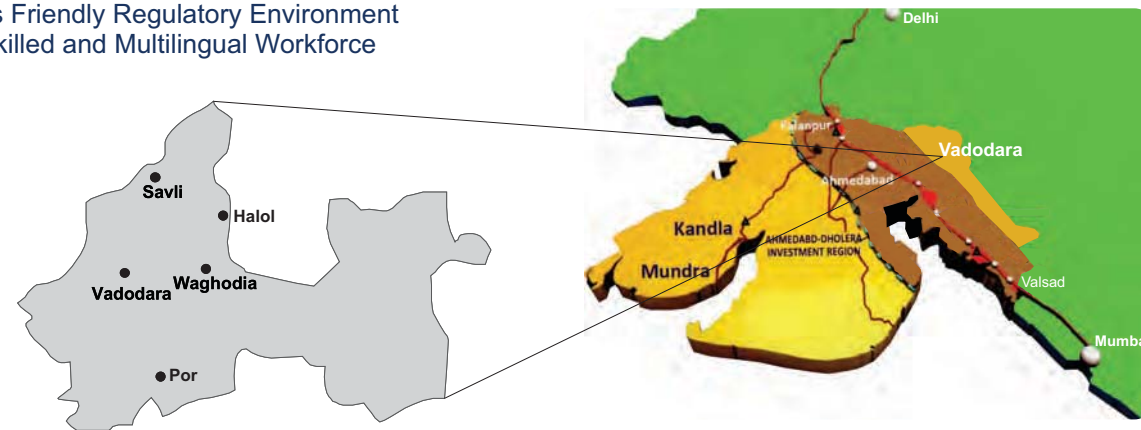
FREE HOLD N.A. INDUSTRIAL PLOT
BANK FINANCE AVAILABLE



Gujarat has been the corporate face of India. It has setup a number of vibrant industrial clusters, industrial Estates and SEZs. It houses most of the major industries of India and a large numbers of SMEs as well as multi-national companies. One of the fastest-growing and most developed state on the Indian subcontinent, Gujarat has been at the forefront of Indian life. The State means business in every way. Its location on India's western coast and the Government's emphasis on infrastructure-led development offer export-import advantages that can efficiently connect businesses to many points throughout India and the world.

Other strengths that enhance bottom-lines as well top-lines include quality power, productive human capital, a conducive business climate and pro-active industrial policies combined with liberal tax structures. All of these combine to give Gujarat, and the businesses who invest in the State, an unbeatable competitive edge.

- » Strategic Location
- » Home to many of India's most ambitious projects
- » Abundant natural resources
- » Transparent, business-friendly policies
- » Land bank availability for industrial use
- » The right work-life balance
- » Pro-active governance
- » Strong Economic Credentials
- » Business Friendly Regulatory Environment
- » Highly Skilled and Multilingual Workforce



OUR AMBITIOUS PROJECT

We are Vadodara's pioneering Industrial Infrastructure Park Developer since more than a decade in and around Vadodara district of Gujarat, India. Vadodara is Gujarat's Premier Business Destination in India and is one of the fastest growing industrial cities of Vibrant Gujarat, with its all inclusive, sustainable and rapid growth, is emerging as a globally preferred place to live in and to do business, facing an establishing future of creating new opportunities for the economic and social vitality.

Siddhi Industrial Infrastructure Park, Waghodia, Dist: Vadodara, is the first of its kind and the most significant rising opportunity available to industrial businesses on the fast growing industrial belt of Vadodara.

It's a unique opportunity for all Micro, Small, Medium Scale Enterprises (MSMEs), Large scale & Multinational companies in Engineering, Automobile, Mechanical, Electricals, Electronics-Ancillary for Auto & Power sectors seeking a strategic foothold on the Delhi-Mumbai Industrial Golden Corridor(DMIC).

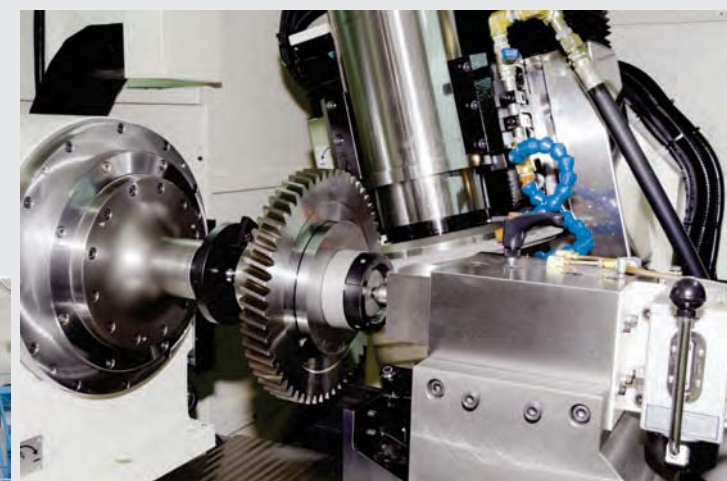
The Industrial Park is spread over more than 150 Acres of Area and has been master planned with flexibility in mind. It is designed with the right basic infrastructure facilities as required by today's upcoming industries and provides an ideal environment friendly Industrial working zone.





State of the Art Facilities

BENEFIT



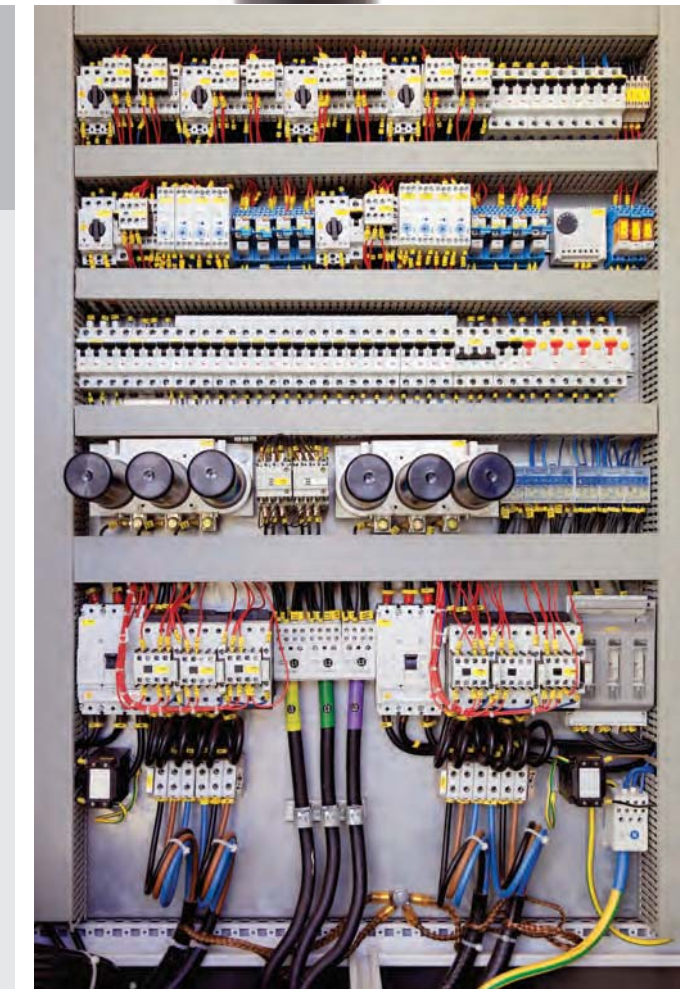
- » Attractive Main Entrance gate on 30 Meters wide opening on state highway
- » We exclusively provide net plot area
- » High Quality Roads to take heavy loads
- » Street Lights on all Main & Internal Roads
- » Storm Water Drain system
- » Tree plantation on all Main & Internal Roads
- » Adequate Water supply to each plot through common bore via underground storage tank & overhead tanks facilities
- » Administrative Office Building
- » Environment friendly zone with elegant land scaped garden
- » Information Kisok and helpdesk
- » High-end security for the entire industrial park
- » Professionally run park administrative office building
- » Specially designed for easy diagonal movement of containers & trucks
- » Onsite First Aid facility





ADVANTAGES

- » Subsidy available on Stamp Duty Registration fees
- » Interest subsidy on Land & Building, Plant & Machinery, R & D Center, Quality Certifications etc. under the MSME Act on Industrial & Service activities
- » Bank Finance available
- » Invest in infrastructure ready plots starting from 500 mtrs to 50,000 mtrs.
- » Build your own factory, start a new industry, expand your existing unit or just lease a purpose built Factory/Warehouse in the eco-friendly environment
- » Excellent external linkages to National & State Highways, Delhi Mumbai Industrial corridor (DMIC) and on Nearest location to Dedicated Freight Corridor (DFCC)
- » Key centers access including Domestic & International Airports, inland container depot & ports
- » Prospects for long term business growth being part of India's fastest growing industrial belt
- » Access to a skilled & growing workforce made up of blue & white color workers
- » Construction Facilities Available from our Organizations Expert Architect & Engineers
- » Fast developments approvals of all projects as part of the most proactive Government of Gujarat
- » Neighbors to premium industrial estates like GIDC Waghodia, Savli – Manjusar (Alindra), Halol – Kalol, Ranoli – Nandeshwari, Makarpura – Vadodara, Por – Ramangamdi, Dabhoi, Por – Karjan National Highway



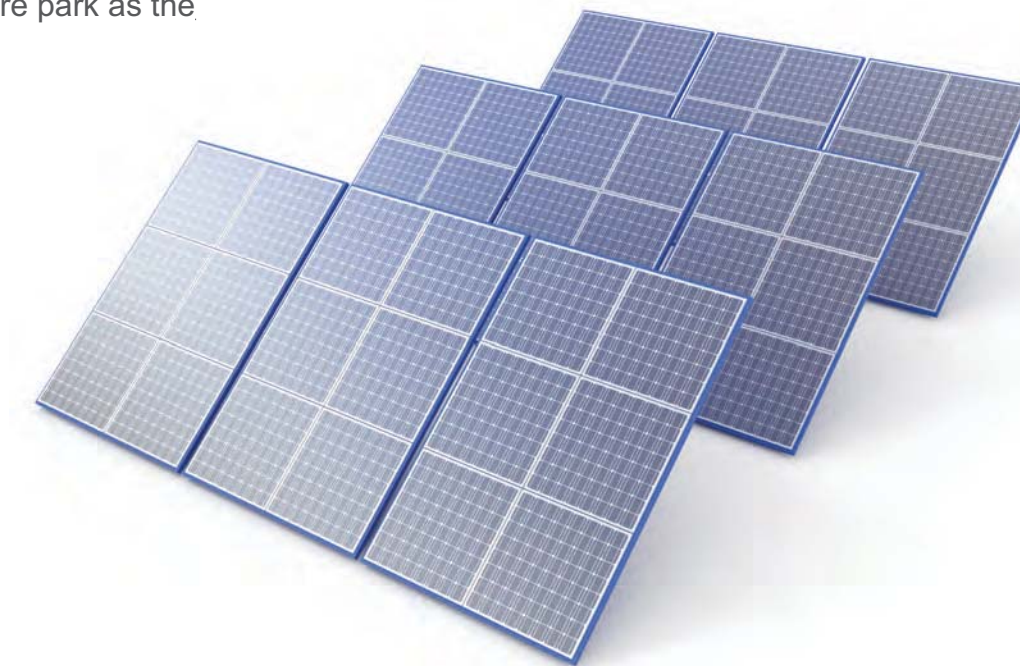
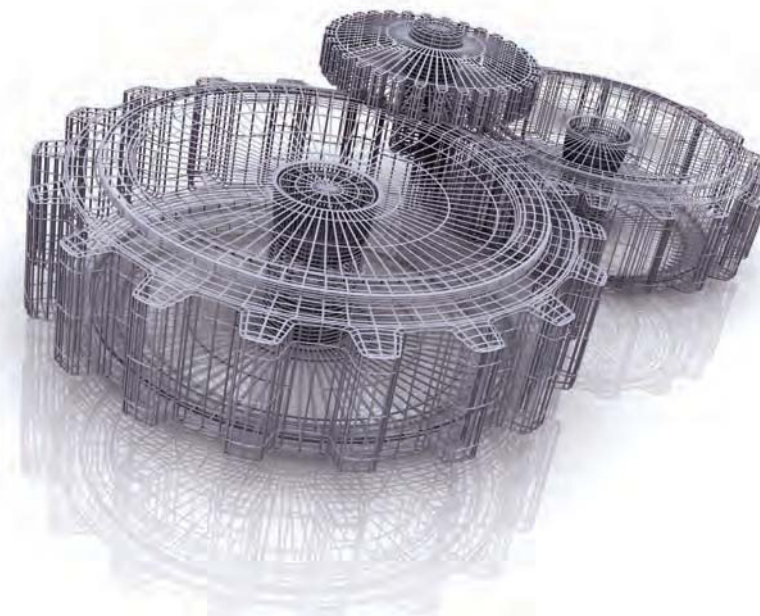
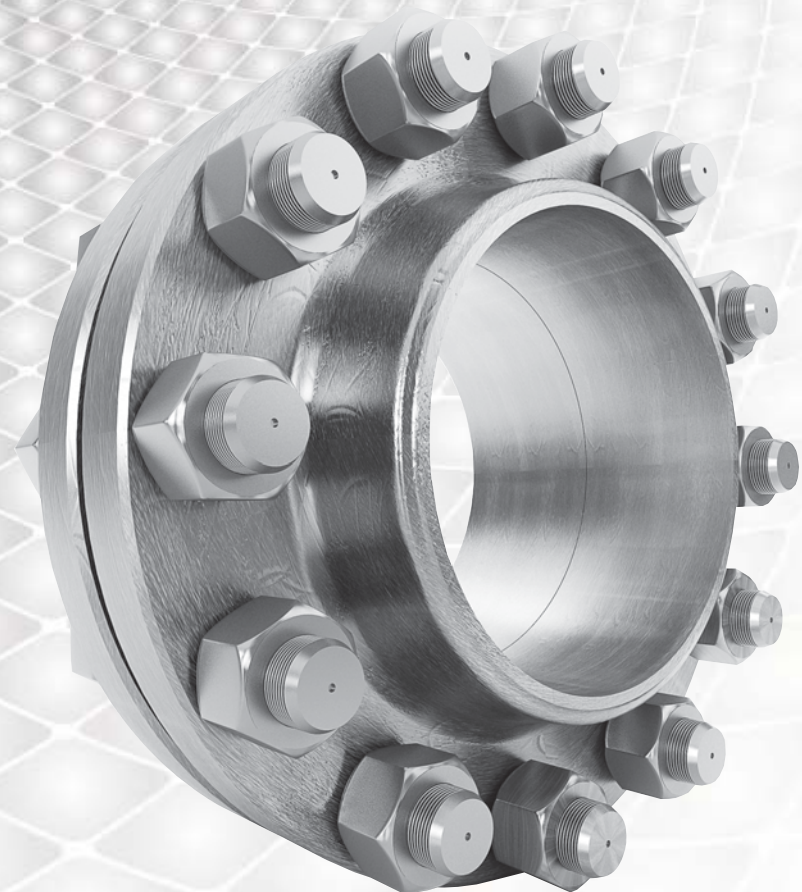
You can focus on growth and profits

Because we'll focus on the rest

The Vibrant Siddhi Industrial Infrastructure Park is going to be transformational and revolutionary. It will provide a platform for various Industries of India and other countries to cooperate and explore attractive business opportunities through our industrial park.

Mission

- » To make the industrialist vision of having an Industrial Infrastructure Park into reality
- » To build a Industrial infrastructure park with appropriate technology that enables Indian & International Industries to regain its market share of country growth by creating additional capacity and guaranteeing efficient, reliable, safe and cheaper options for services to its valued customers
- » To set up Multimodal Industrial infrastructure parks along the lines of Siddhi Industrial Infrastructure Park and provide complete Industrial Park's solution to our industrialist customers
- » To support the government's initiatives toward ecological sustainability by encouraging users to adopt industrial infrastructure park as the most environment friendly mode for their future industrial requirements





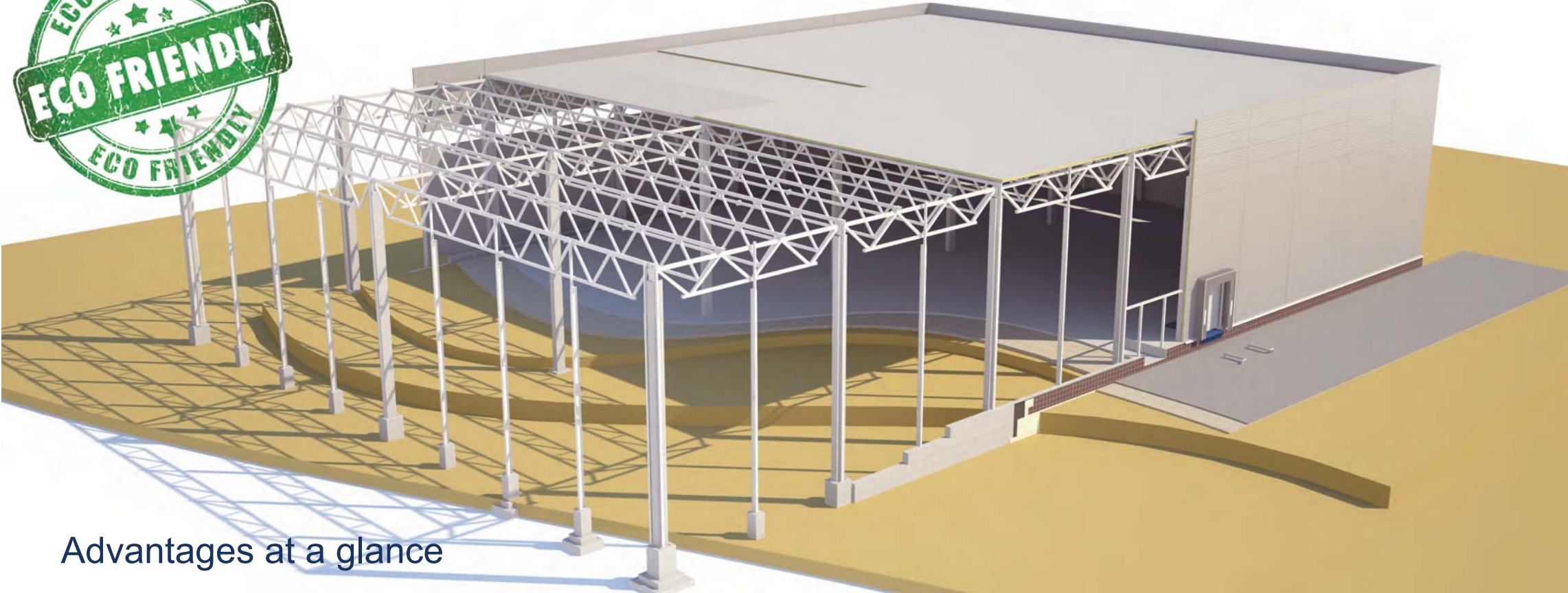
Creating an environment Where business can thrive

Government of Gujarat supports the Industrial & Service activities as RED CARPET to the new & expanding Industries in Industrial Infrastructure Park Area. Benefits are also available under the MSMED Act as announced by the Government of India, and given below:

With Gujarat's track record of success in industrial and infrastructure development, Gujarat is now eyeing to become a globally preferred place to live in and to do business. With this objective in mind, it has started setting large size Special Investment Region(SIR). Gujarat wants to enable this SIRs to become Global hubs of economic activity with world class infrastructure, premium civic amenities and pro-active policy regime. Incidentally, this strategy of the State fits very well with the Economic Strategy of the Central Government

- 1. Under Industrial Activity :
 - a. Micro Enterprise (Investment in Plant and Machinery up to Rs.25 lakhs.)
 - b. Small Scale Enterprise (Investment in Plant and Machinery up to Rs.5 Crore.)
 - c. Medium Scale Enterprise (Investment in Plant and Machinery up to Rs.10 Crore)
 - 2. Under Service Activity :
 - a. Micro Enterprise (Investment in Plant and Machinery up to Rs.10 lakhs.)
 - b. Small Scale Enterprise (Investment in Plant and Machinery above Rs.10 lakhs, up to Rs.2 Crore.)
 - c. Medium Scale Enterprise (Investment in Plant and Machinery above Rs.2 Crore, up to Rs.5 Crore)
- » District Industrial Commissioner, (DIC Office) & SIDBI, Vadodara, provide financial assistance & offer subsidy on Interest, Quality Certifications, Foreign Tours & Exhibition Participations etc. and on various other activities under its roof of Micro, Small & Medium enterprises act (MSME).

More than 10 cores investment in Plant and Machinery will be considered as Large Scale Enterprise.



Advantages at a glance

- » Heavy Duty Roads
- » Street Lights
- » Security Gates
- » CCTV Cameras for enhanced security
- » Water Supply to Each Plot
- » Tree Plantations on Road Side
- » Storm Water Drain System
- » Demarcation of all Sub Plots
- » Loading - Unloading Area at Common Plots
- » Subsidy on Stamp Duty Registrations Fees
- » Bank Finance facility
- » Proposed 24/7 ATM
- » Check Drop box
- » Courier Service

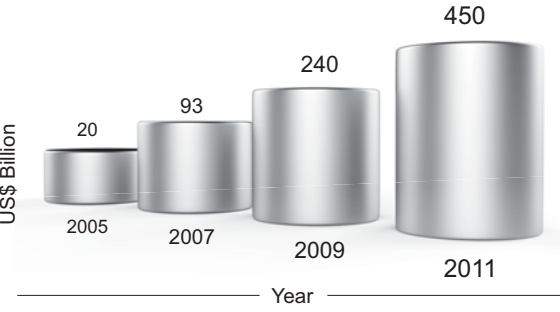
Advantage of location

With 5% of India's population, Gujarat has 16% of industrial production. The State has been witnessing double digit average growth in the last 5 years, even in a time of global recession.

- » Longest coastline in India 1600 Kms
- » Number of ports 42
- » Number of Airports 17
- » Special Economic Zones (SEZs) 60
- » Integrated Statewide Gas Grid 2400 kms

Proposed Investments

Investments committed during Vibrant Gujarat Summits (2005 - 2011)



 भारतीय स्टेट बैंक (लघु तथा मध्यम उद्योग शाखा) शाखा (SBI) मकरपुरा औद्योगिक क्षेत्र सी.सी.आई. इस्टेट, मकरपुरा, वडोदरा-390010 टोल: 300040 बी. (0265) 2638435, 2638435 फ़ैक्स: (0265) 2638435, 2638435 ई-मेल: sbi.01456@sbi.co.in	भारतीय स्टेट बैंक (लघु एवं मध्यम उद्योग शाखा) मकरपुरा औद्योगिक क्षेत्र सी.सी.आई. इस्टेट, मकरपुरा, वडोदरा-390010 टोल: 300040 बी. (0265) 2638435, 2638435 फ़ैक्स: (0265) 2638435, 2638435 ई-मेल: sbi.01456@sbi.co.in	State Bank of India (SME Branch) Makarpura Industrial Estate, V.C.C.I. Building, Makarpura, Vadodara- 390010 Tel. : (0265) 2647450, 2638435 Fax: (0265) 2635217, Telegram: MAKBRAN E-mail: sbi.01456@sbi.co.in
-----------------------------------------------------------------------------------------------------------------------------------------------------------------------------------------------------------------------------------------------------------------------------------------------------------------------------------------------------------	------------------------------------------------------------------------------------------------------------------------------------------------------------------------------------------------------------------------------------------------------	-----------------------------------------------------------------------------------------------------------------------------------------------------------------------------------------------------------------------------------------------------

Date: 01/08/2012

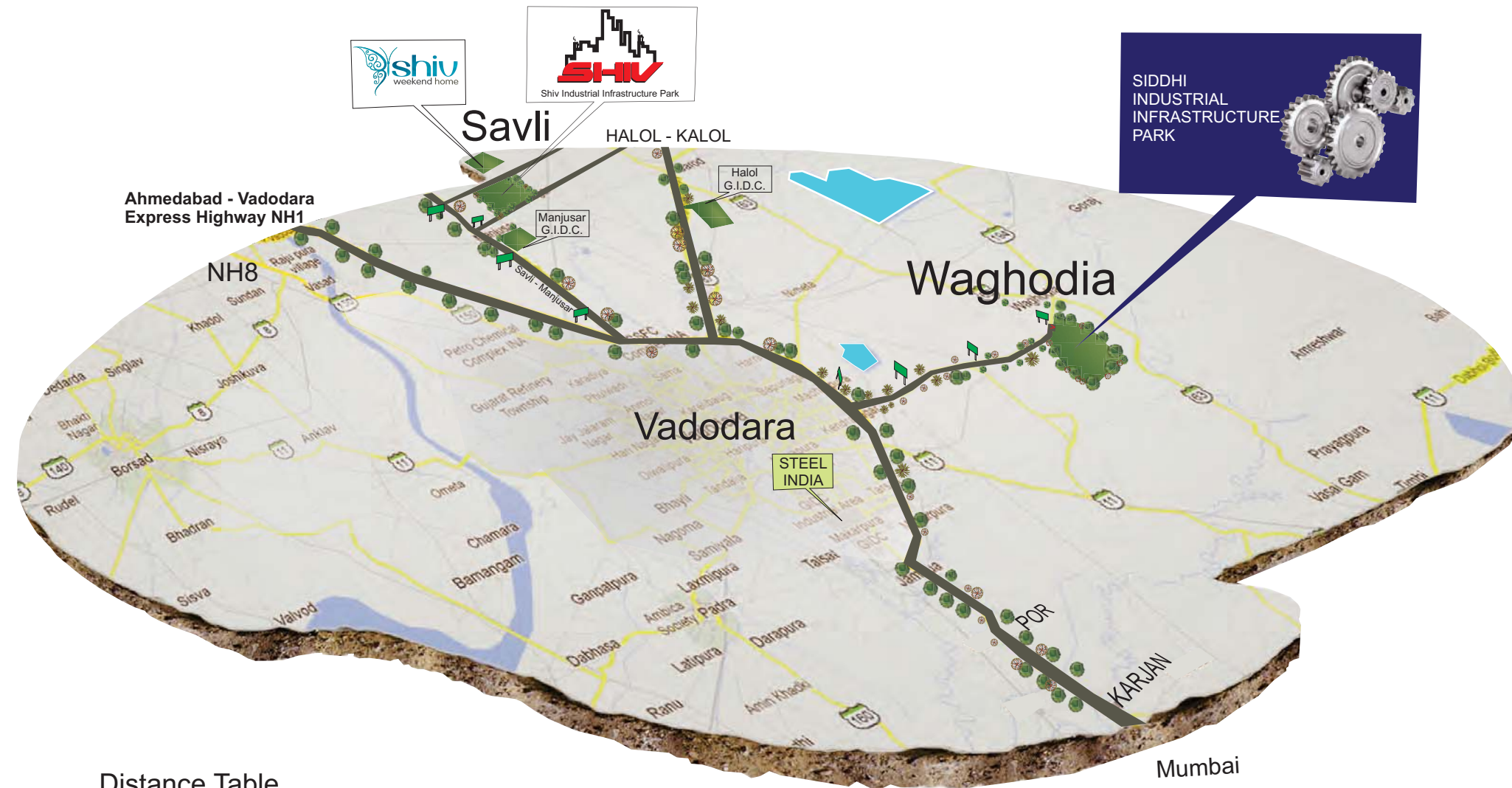
Certificate

This is to advice that **M/s Siddhi Industrial Infrastructure Park** a Partnership Unit is engaged in construction of Industrial Park. The proposed site is located at Opp Waghodia GIDC, Nr MGVCCL (GEB), Village- Waghodia, District Vadodara.

State Bank of India, SME Makarpura I.E. Branch Vadodara may finance to entrepreneurs for construction of Factory shed and Purchase of New Machinery, subject to viability, feasibility of the project and completion of other legal formalities.

कुते भारतीय स्टेट बैंक
FOR STATE BANK OF INDIA
Chief Manager
 मकरपुरा औ.श. / SME Br. Mak.I.E., Baroda
 SME Branch
 Makarpura Industrial Estate
 Vadodara

DISCOVER THE POSSIBILITIES



Distance Table

	Located on Gujarat State Highway		Delhi Mumbai Corridor Ahmedabad-Mumbai H/W	11 KMS	Sanand (Ahmedabad)	125 KMS	
	Vadodara Airport Ahmedabad Airport Mumbai Airport	14 KMS 110 KMS 425 KMS		Vadodara 3* 4* 5* Hotel	18 KMS	HALOL - KALOL	25 KMS
	International Airport Ahmedabad Airport Mumbai Airport	110 KMS 425 KMS		Vadodara Railway Station	18 KMS	 Gujarat Port Dahej Port 150 KMS Hazira Port 195 KMS Pipavav Port 340 KMS Kandla Port 400 KMS Mudra Port 450 KMS Mumbai Port Jnpt Port 480 KMS Nhava sheva Port 485 KMS	
	Inland Container Depot (icd/cfs) Dashrath	20 KMS		Vadodara Bus Depot	18 KMS		
	Hospital (108)	18 KMS		Education	4/18 KMS		

Location & Connectivity

Siddhi Industrial Infrastructure Park is strategically located right on the Gujarat State Highway, approx. 14km away from the National Highway No.8, and is opposite to GIDC, Waghodia Industrial Estate, Near MGVC(L)(GEB).

It is well connected and at a commuting distance as given below:

Roads

- Linked to Vadodara – Mumbai six lanes Express Highway.
- Linked to Vadodara – Ahmedabad Express Way. (Rajkot–Kandla Port NH 8A)
- Linked to Vadodara - Delhi National Highway (Halol - Kalol)
- Local Bus transportation walking

Railway Station

- Existing Vadodara Railway Station at Approx. 20 km. (Western Railway & Central Railway Junction).

Airport

- Vadodara Domestic Airport is just 16 km
- Ahmedabad International & Domestic Airport 125 km
- Mumbai International & Domestic Airport 425 km

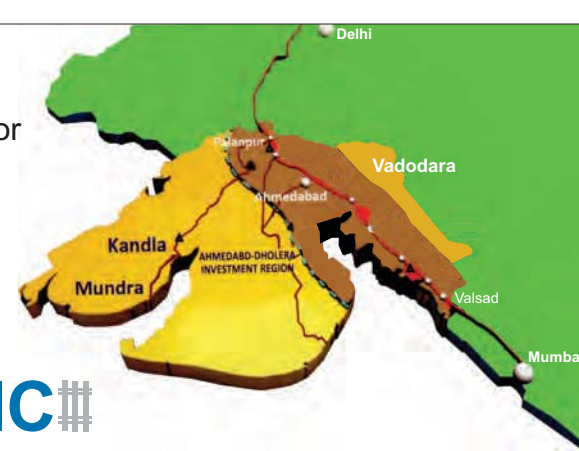
Sea Port

- The Dahej Terminal port is 150 km from the Park
- Hazira & Pipavav port are at a distance of 195 km and 340 km respectively
- The Kandla port is 400 km from the Park
- JNPT Mumbai & Mundra ports are well connected by road and at a distance of 480 km and 450 km respectively.

Inland Container Depot

- Dashrath, Vadodara at a distance of 25 km

Delhi- Mumbai Industrial Corridor



#DMIC#

- DMIC : A high impact industrial area within 150 kms distance on both sides of DFC (Dedicated Freight Corridor)
- 24 Industrial nodes along the DMIC
- 6 nodes in Gujarat
- A Global Manufacturing and Trading Hub - "The engine for economic resurgence of the country."
- Supported by world class infrastructure & policy framework





Our Ongoing Project

shiv
weekend home

At : Paldi (Tundav - Samlaya Jarod road)
Tal Savli , Dist Vadodara Gujarat, India
www.shivweekendhome.com
info@shivweekendhome.com
Contact : +91 98240 24786



OUR SUCCESSFULLY COMPLETED PREVIOUS PROJECT

GOVERNMENT OF GUJARAT APPROVED

SHIV INDUSTRIAL INFRASTRUCTURE PARK

Phase I - Phase II



We are Vadodara's pioneering Industrial Infrastructure Park Developer since more than a decade in and around Vadodara district of Gujarat, India. We give title clear N.A. industrial property with all basic infrastructure facilities & with our extensive experience of realty business deliver outstanding industrial infrastructures, commercial projects, master planned land development projects etc. across Vibrant Gujarat. We are backed by a technically qualified, strong dynamic team of experienced professionals for establishing an Industrial Infrastructure park.

Our Salient Key Features:

- Title Clear Industrial N.A. Land spread over more than 60 Acres of Area
- Infrastructure Ready Plots of 500 Sq.mtrs. to 50,000 Sq.mtrs.
- Useful platform for industrial growth & prosperity
- A one stop access to talented, skilled, semi skilled workers, breakthrough technology & worldwide manufacturers

Free Hold Industrial N.A. Plot

At: Village – Lamdapura, Nirma-Canal Road,
Near. GIDC, Savli - Manjusar(Alindra)
Tal.-Savli, Dist. Vadodara, Gujarat, India
www.shivindustrialpark.com
info@shivindustrialpark.com



Disclaimer :

- » The Developers reserve the full rights to make any additions, alternation and amendments for changes in plan and specifications that might be necessary from the to time
- » This Documents is not a Legal Documents and cannot form part of charges, Industrial co-op Society Charges, Common Maintenance Deposit, MGVCL (GEB), service Tax and All other Govt. or Semi Govt. Taxes shall be extra at Actual. (If Applicable).
- » All Visuals Shown in the Catalogues / Brochures are as Designers Representation and are subjects to charges as per requirements. All Dimensions data are based on theoretical drawings and actual dimensions at site may vary acceptable limits.
- » Refund in case of cancellations will be made within 30 days from the date of booking of new client only
- » Administrative expense of 25,000.00 will be deducted from refund amount. (Subject to Vadodara Jurisdiction only)
- » Payment in favor of "SIDDHI INDUSTRIAL INFRASTRUCTURE PARK"

ADVANCE ENGINEERS
ARCHITECTS

Hardik Patel
98250 45219

Harish Patel
98255 05162